

HERCULES

BY CLASSIC



Fits all sizes

UNIVERSAL HEAVY DUTY BED FRAME

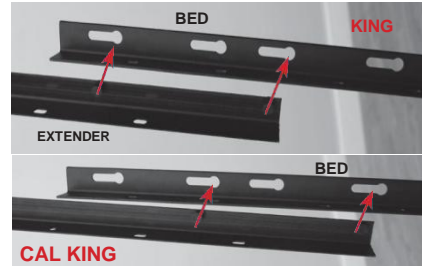
PARTS

- 1- Right Side Frame
- 1- Left Side Frame
- 2- Extender Bars
- 1- Center Bracket
- 7- Carpet Rollers
- 1- Wrench
- 6- Bolts
- 6- Washers
- 6- Nuts

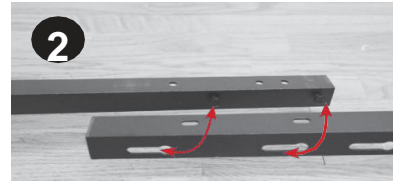
ASSEMBLY INSTRUCTIONS



STEP 1: Swing out cross arms on both side pieces to 90 degrees.



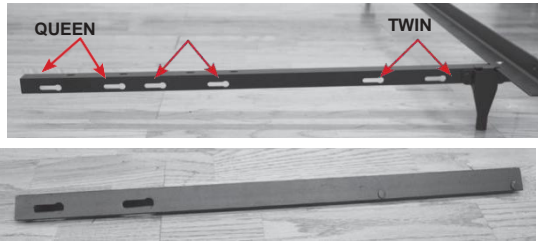
KING AND CAL KING EXTENDER: Line the rivets on the extender with the key holes on the frame and lock into place.



STEP 2: Place rivets of the cross arms into appropriate key holes.



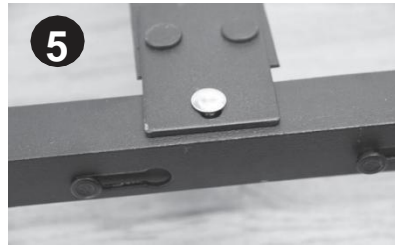
STEP 3: Slide rivets to lock in place. Repeat step 2 and 3 on other side.



NOTE: Each set of key holes correspond to bed frame size. An Extender bar is included for King and Cal King



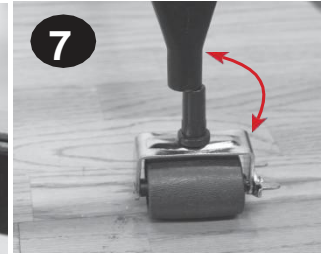
STEP 4: Place support bar in center and align with holes on top.



STEP 5: Place bolt into hole on top center of bed frame.



STEP 6: Secure washer and nut with enclosed wrench. Repeat steps 6-7 on other side. Use the wrench to tighten the bolt tightly



STEP 7: Slide carpet rollers into bed frame legs. After locating the bed frame to its final position, lock the rollers. To lock the rollers, rotate the arm counter clockwise until it stops.



STEP 8: Bed frame is assembled and ready for use.

STEP 9: Headboard bracket can be attached to headboard if necessary.

